

**Drum House, Nightingale Lane, Wardour, Salisbury SP3 6RN**

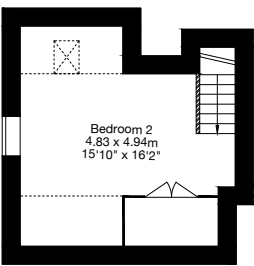
Gross Internal Area (Approx.)

Main House = 397 sq m / 4,273 sq ft

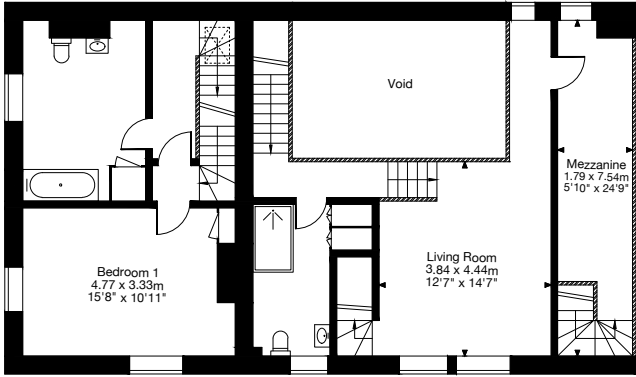
The Cottage = 113 sq m / 1,216 sq ft

Guildhall = 190 sq m / 2,045 sq ft

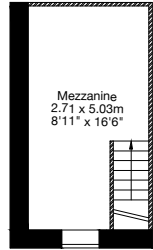
Total Area = 700 sq m / 7,534 sq ft



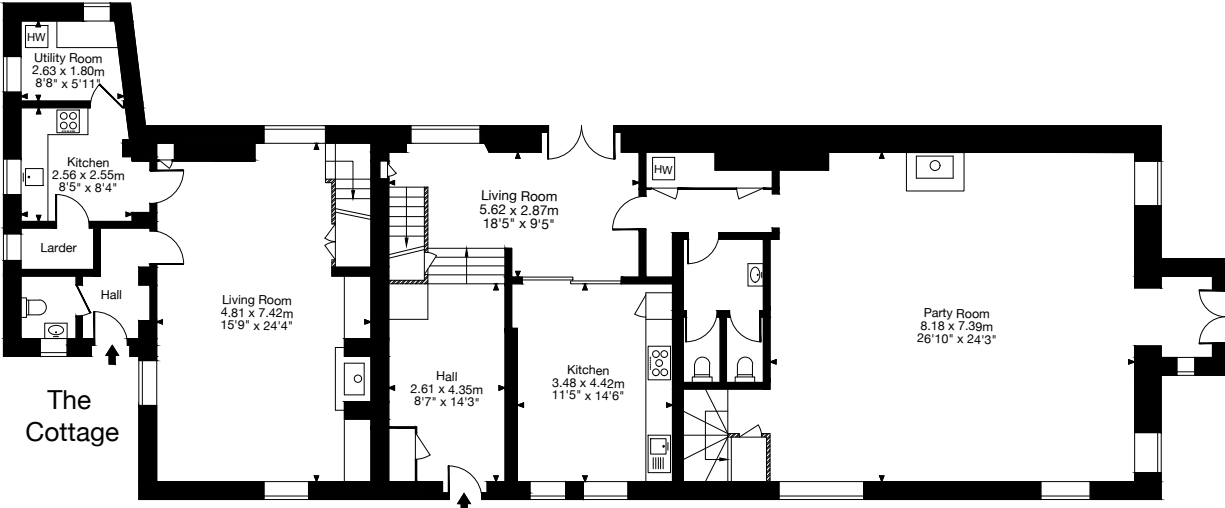
Second Floor  
The Cottage



First Floor



Mezzanine



Ground Floor  
Guildhall